



WELCOME

MIDWESTERN CAREER COLLEGE

MISSION

Midwestern Career College's ESL Program's mission is to provide non-native speakers of English with the English language, academic, and cultural skills that will enable them to further their education in U.S. colleges or universities and/or gain employment in their native countries.





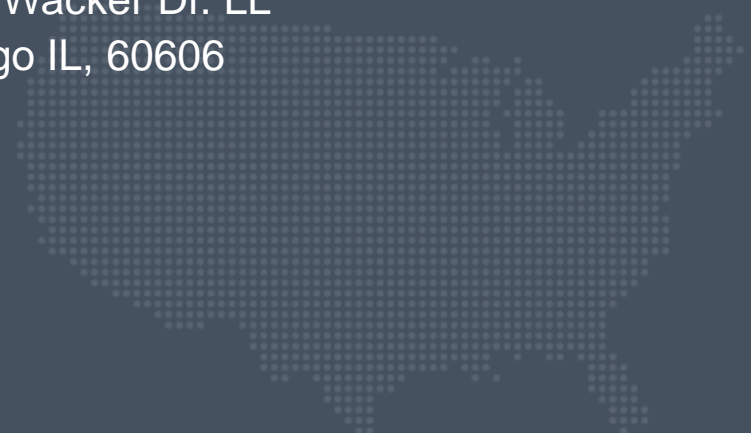
MIDWESTERN CAREER COLLEGE

CAMPUS LOCATIONS

CHICAGO CAMPUS

20 N. Wacker Dr. Suite 3800
Chicago IL, 60606

100 S Wacker Dr. LL
Chicago IL, 60606





MIDWESTERN CAREER COLLEGE

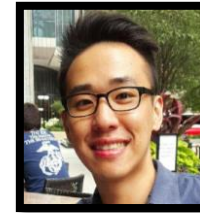
INTERNATIONAL DEPARTMENT



PATRICIA FIENE
ESL Program Director



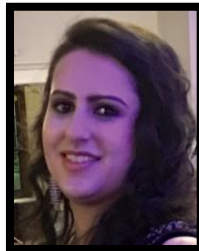
MIRANDA MUELLER
Associate Director



JIHOON DOH
International Student Advisor/DSO



ERIKA LITTLES
Student Services Manager



OLIA SWEISS
Librarian



AMMY AKARAPUNCHAI
International Admissions Coordinator



MIDWESTERN CAREER COLLEGE

SCHOOL HOURS

BUSINESS HOURS

Monday-Thursday: 9am – 6pm

Friday-Saturday 9am-4pm

Sunday: Closed

CLASS SCHEDULES

4-DAY/WEEK

Monday - Thursday 9:30 – 2:30

MIDWESTERN CAREER COLLEGE

ACADEMICS

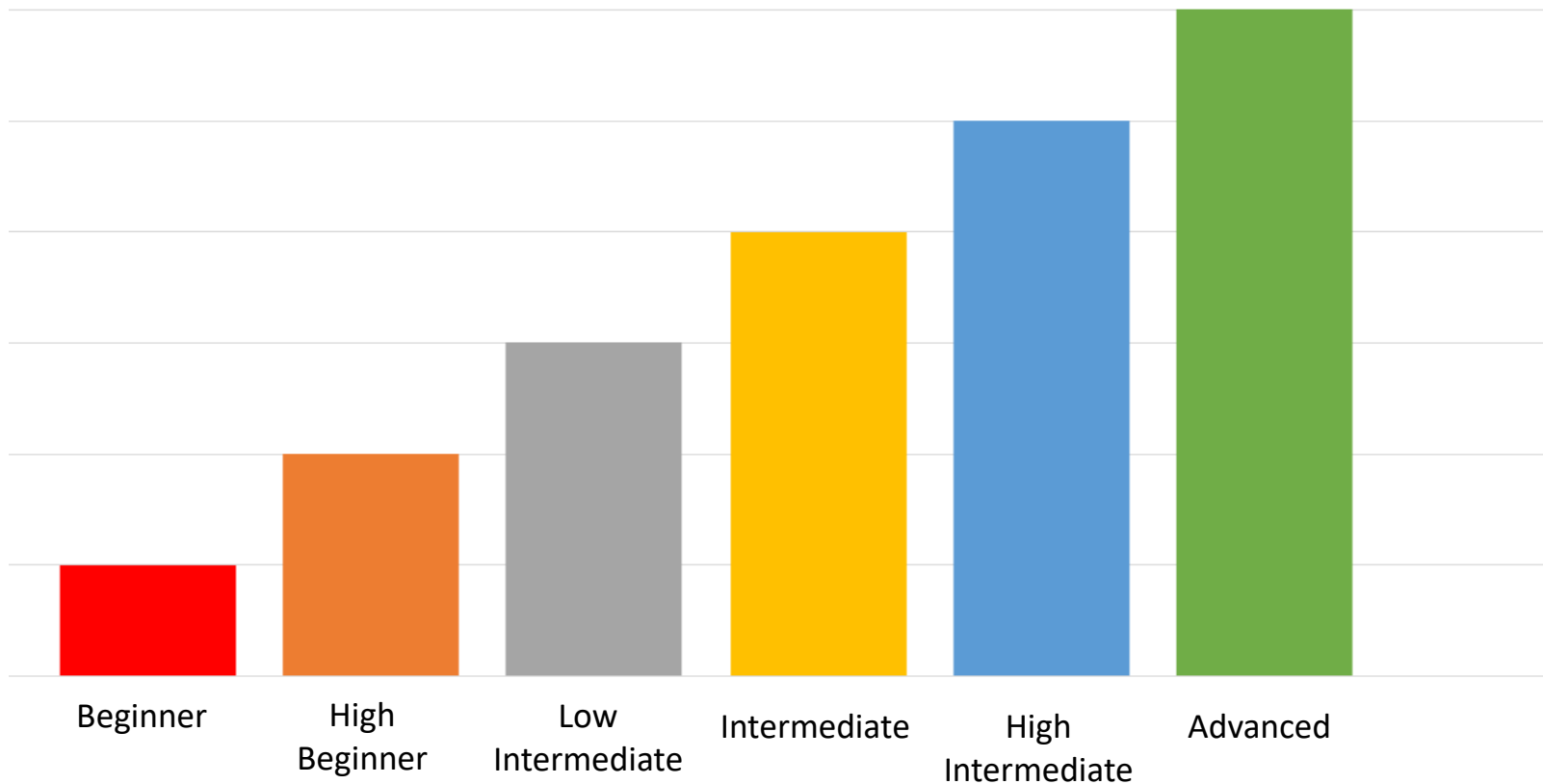
Midwestern Career College's ESL Program is academically focused and geared to get you ready for speaking English inside and outside the classroom.





MIDWESTERN CAREER COLLEGE

LEVEL PROGRESSION: 11 weeks / 1 level per term

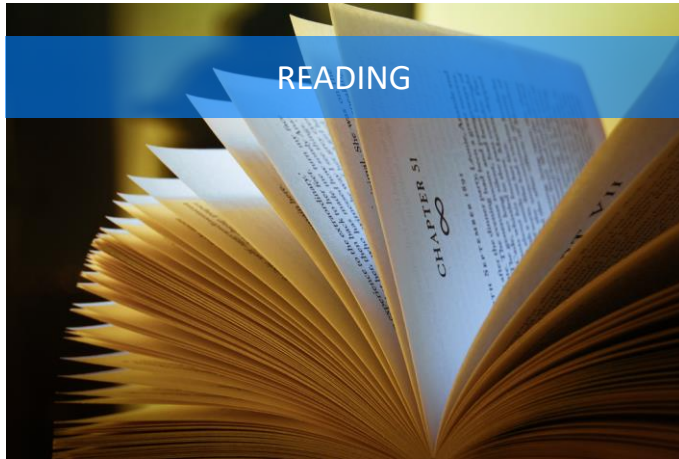




MIDWESTERN CAREER COLLEGE

SUBJECT AREA CLASSES

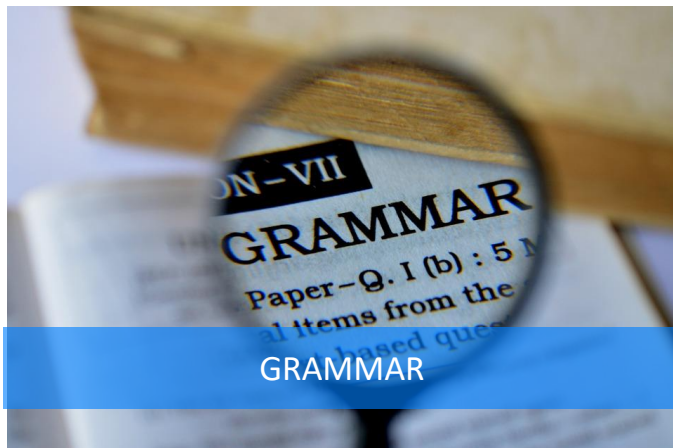
READING



WRITING



GRAMMAR



LISTENING & SPEAKING





MIDWESTERN CAREER COLLEGE

THE COMMUNICATIVE APPROACH



Learn English by
communicating!

Requires your active
participation in all
skill classes.



MIDWESTERN CAREER COLLEGE

ATTENDANCE

THE RULES

- Students must go to class 18 hours a week
- Come to class ON TIME.
- Do not take long breaks in the middle of classes or leave early.
- There are no excused absences.
- If you cannot attend class, email your instructor.
- If you are out of class for more than 21 days, you will be withdrawn from the program.



MIDWESTERN CAREER COLLEGE

SATISFACTORY ACADEMIC PROGRESS

WHAT IS IT?

- To pass to the next level, you must receive a final grade of a C (70%) or higher.
- If you fail a class, you will be on SAP Warning status. MCC highly recommends that you get help from MCC's free ESL tutor.
- If you fail a class twice, you will be withdrawn from the program.





MIDWESTERN CAREER COLLEGE

ACADEMIC RESOURCES

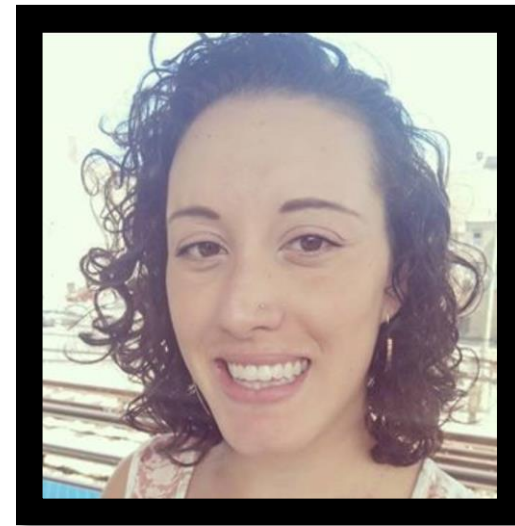


Laura Vinzant

Tutor

Ask Laura about...

- Tutoring services
- Academic advice



Erika Littles

Student Services Manager

Ask Erika about...

- Academic options after finishing the ESL program.
- Associate programs at MCC
- Applying to other colleges/universities



Tutoring Services

- To support our ESL students and ensure your success, MCC provides free tutoring services.
- These sessions take place in the library Monday – Thursday from:
 - 11:45 AM – 12:15 PM
 - 2:30 PM – 3:30 PM
- Request a tutoring session with the Tutoring Request Form. Copies are available from the Librarian, the ESL Program Director, International Student Advisor/DSO, and the Registrar.
- OR email esltutor@mccollege.edu





Academic Advising at MCC

- Student Services Department serves all students at MCC.
- The Student Services Manager provides academic advising.
- As a part of MCC's ESL program, you can schedule an appointment with Student Services. You can discuss your academic future in the U.S. after you complete the ESL program.
- Student Services can help by researching colleges/universities inside and outside the Chicago area.
- To make an appointment please email Student Services at studentservices@mccollege.edu.



MIDWESTERN CAREER COLLEGE

Library

MCC provides resources for ESL students, including textbooks, extra books to help you study, and online resources such as games, videos, worksheets, and more!





MIDWESTERN CAREER COLLEGE

GETTING YOUR BOOKS

WHEN DO YOU GET THEM?

The school Librarian will distribute your books on the first day of class.

CAN I EXCHANGE MY BOOKS FOR FREE IF I CHANGE LEVELS?

- Yes! But only if there is NO writing in your book.
- If you write in your book or use the online workbook code and you want to change levels, you may have to pay for your next book.
- If you are concerned that you are not in the correct level, do NOT write in your book.





MIDWESTERN CAREER COLLEGE

MCC ONLINE LIBRARY: ESL WEB-BASED TOOLS

HOW TO ACCESS:

1. Go to mccollege.edu
2. Click Academics
3. Click MCC Online Library

A screenshot of the Midwestern Career College website. The top navigation bar includes contact information: a phone icon with "(312) 236-9000", an email icon with "admissions@mccollege.edu", and links for "Request Information" and "Log in". Below this is a main navigation menu with "WHY MCC", "ACADEMICS", "LOCATIONS", "ADMISSIONS", "INTERNATIONAL", "CAREERS", and "BLOG". The "ACADEMICS" menu is expanded, showing two columns of program options. The first column lists "ASSOCIATE'S OF APPLIED SCIENCE (AAS)" programs: Diagnostic Medical Sonography, Magnetic Resonance Imaging (MRI) Technology, and Non-Invasive Cardiovascular Sonography. The second column lists "CERTIFICATE PROGRAMS": Dialysis Technologist Training Program, Electroneurodiagnostic (END) Technologist, Magnetic Resonance Imaging (MRI) Technologist, Medical Assisting Program-Diploma, and Surgical Technologist Training Program. Below these is the "ESL DEPARTMENT" section with "English Language Training". The "LIBRARY" option, which includes "MCC Online Library", is highlighted with a red rectangular box. At the bottom of the page, there are four large buttons: "REQUEST INFO" with a book icon, "APPLY ONLINE" with a graduation cap icon, "VISIT CAMPUS" with a globe icon, and "EVENTS" with a calendar icon.



MIDWESTERN CAREER COLLEGE

MCC ONLINE LIBRARY: ESL WEB-BASED TOOLS

HOW TO ACCESS:

4. Library Tools and Resources
5. ESL Web-Based Tools

Or access via this web address:

<http://mccollege.libguides.com/home/eslwebtools>

The screenshot shows the Midwestern Career College Library website. At the top left is the college's logo and name. Below it is a breadcrumb trail: "Midwestern Career College / LibGuides / MIDWESTERN CAREER COLLEGE LIBRARY / ESL Web-based Tools". The main heading is "MIDWESTERN CAREER COLLEGE LIBRARY". To the right of the heading is a search box with the text "Search this Guide" and a "Search" button. On the left side, there is a vertical menu of blue buttons: "Home", "Library Tools & Resources", "Databases", "Web-based Tools", "Program-Based Web Tools", "ESL Web-based Tools" (highlighted with a red border), "Tutoring", and "Copyright Information". In the center-right, there is a large graphic of the letters "ESL" where each letter is filled with various national flags. Below the graphic is the text "ENGLISH AS A SECOND LANGUAGE". At the bottom, there is a "CONTACT THE LIBRARIAN" button and a horizontal navigation bar with buttons for "Listening", "Writing, Grammar & Punctuation", "Reading", "Vocational", "Speaking", "Vocabulary", and "Multi-Purpose ESL Web-based Tools".

MIDWESTERN CAREER COLLEGE

Activities & Social Media

We offer several activities for our students at Midwestern Career College!





MIDWESTERN CAREER COLLEGE

MCC INTERNATIONAL ACTIVITIES





MIDWESTERN CAREER COLLEGE

SOCIAL MEDIA



Like us on social media to get the latest news from MCC!

**@MIDWESTERN
CAREER COLLEGE -
INTERNATIONAL**

Learn about:

- On-Campus Employment Opportunities
- School Events
- Activities



MIDWESTERN CAREER COLLEGE

MEET YOUR CLASSMATES!



Take a
break!

MIDWESTERN CAREER COLLEGE

NEED TO KNOW

There are a few things you need to know to get started in Chicago. We're here to help!

Medical Insurance

Housing

Transportation

Emergency Numbers

US Laws





MIDWESTERN CAREER COLLEGE

MEDICAL CENTERS IN THE US

OVERVIEW OF THE US HEALTHCARE SYSTEM



MIDWESTERN CAREER COLLEGE

MEDICAL INSURANCE

MCC HIGHLY RECOMMENDS THAT YOU
PURCHASE MEDICAL INSURANCE

PSI Health Insurance

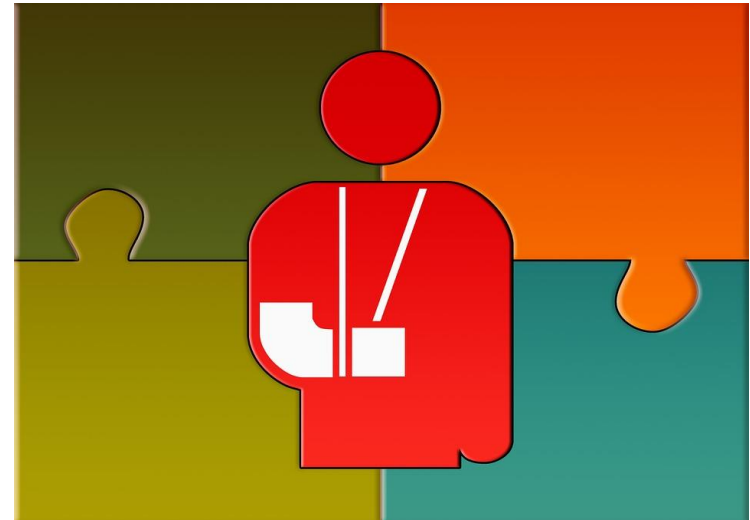
<https://www.psiservice.com/>

ISO Student Health Insurance

<https://www.isoa.org/>

iNext International Health Insurance

<https://www.inext.com/>



Ask Jihoon for
more
information!

Note: MCC does NOT provide students with
medical insurance.



MIDWESTERN CAREER COLLEGE

MEDICAL CENTERS IN THE US

WALK-IN CLINIC

- Minor illnesses (Throat, Eye, Ear pain and more)
- Vaccinations (Influenza, Hepatitis A & B and more)

URGENT CARE

- Non life threatening emergencies (Minor fractures in fingers or toes, Skin rashes and infections, Vomiting, diarrhea, or dehydration, Cuts that don't involve much blood but might need stitches)

HOSPITAL OR EMERGENCY ROOM

- All life threatening medical conditions (Broken bone, serious head, neck, or back injury, etc.)





MIDWESTERN CAREER COLLEGE

NEARBY MEDICAL CENTERS

HOSPITAL (EMERGENCY ROOM)

Northwestern Memorial Hospital

251 E Huron St.
Chicago, IL 60611
(312) 926-2000

URGENT CARE

Physician's Immediate Care

600 W Adams St
Chicago, IL 60661
(312) 506-0900

PHARMACY

Walgreens

79 W Monroe St
Chicago, IL 60603
(800) 323-8622

CVS

208 W Washington St
Chicago, IL 60606
(312)323-8622

CLINIC

Walgreens

79 W Monroe St
Chicago, IL 60603
(800) 323-8622





MIDWESTERN CAREER COLLEGE

FIND HOUSING

HOW TO FIND HOUSING

- Look for an apartment on Housing websites.
- Contact the owner via email or by phone.
- Visit the apartment with a friend.
- Ask questions about price, safety, utilities.
- Sign the contract.



Note: MCC does NOT provide students with housing.



MIDWESTERN CAREER COLLEGE

HOUSING TIPS

RENTING AN APARTMENT

- When you rent an apartment, you may have to pay a(n):
 - Application Fee
 - Security Deposit
 - Move-in Fee

Make sure everything is in writing!

VISITING APARTMENTS

- Always visit apartments with a friend
- If you feel uncomfortable talking to the owner, you probably do not want to live there
- If you immediately do not like the neighborhood, you do NOT have to see the apartment



Ask Jihoon
for more
information!



MIDWESTERN CAREER COLLEGE

HOUSING

GENERAL HOUSING & RELOCATION SERVICES

ApartmentSearch.com

<https://www.apartmentsearch.com/>

WellStay

<https://www.wellstayusa.com/our-mission>

Apartment Finder

<https://www.apartmentfinder.com>

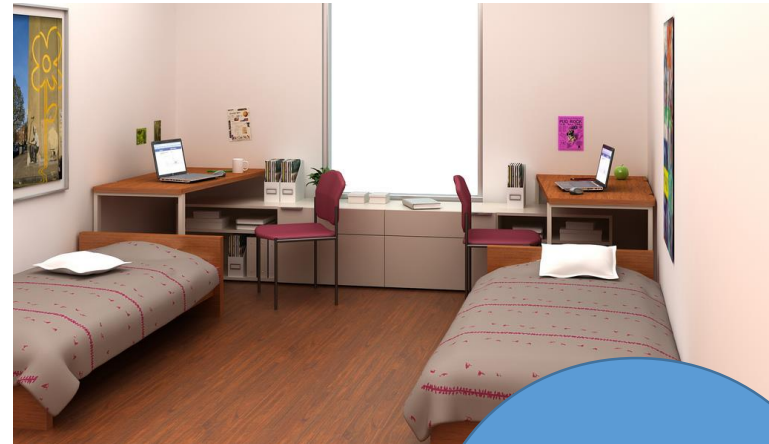
Apartments.com

<https://www.apartments.com/>

FURNITURE RENTAL SERVICES

CORT Furniture

<https://www.cort.com/student>



Ask Jihoon
for more
information!



MIDWESTERN CAREER COLLEGE

PHONE PLANS

HOW TO GET A US PHONE NUMBER

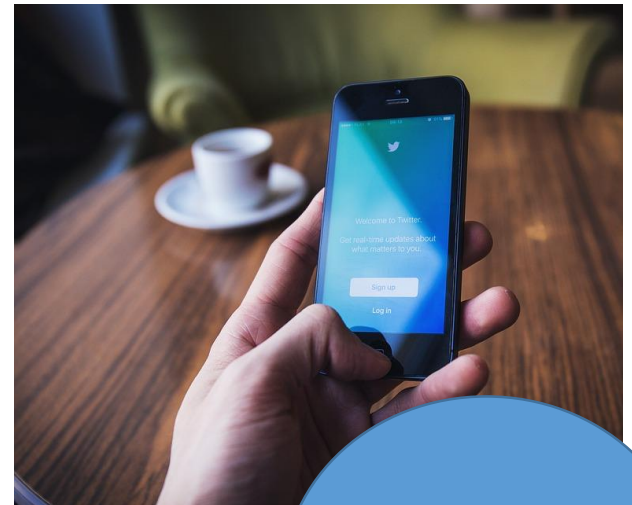
If you haven't purchased a U.S phone yet, you can get a SIM card from Jihoon's Office and get a U.S Phone number.

No need to buy a new phone!

PROVIDER

campusSIMs

<https://campussims.com/us/>



Ask Jihoon
for more
information!



MIDWESTERN CAREER COLLEGE

DRIVING

HOW TO GET A DRIVER'S LICENSE?

You can apply for a driver's license at your local Department of Motor Vehicles (DMV) office.

The office usually requires,

- Active I-20
- Passport
- Proof of residence
- A letter from DSO

Nearby Office

Chicago Central Illinois Secretary of State
Facility
100 W Randolph St, Chicago, IL 60601
(312) 793-1010





MIDWESTERN CAREER COLLEGE

TRANSPORTATION



UBER

lyft





MIDWESTERN CAREER COLLEGE

GETTING YOUR VENTRA CARD FOR THE CTA

Get your Ventra Card at
CVS, Walgreens, or the
train station!

NOTE: MCC does
not offer a U-Pass



Register your card at
www.ventrachicago.com





MIDWESTERN CAREER COLLEGE

PARKING AT MCC

PARKING

Washington-Wells Self Park

230 W. Washington St.

\$14 for 12 hours, enter garage before 12:30pm

\$7 for 12 hours, enter after 12:30pm

\$6 for 12 hours, enter garage after 3pm

Weekends: \$8 for 12 hours

Washington Franklin

217 W. Washington St.

\$15 for 12 hours, enter garage before 12:30pm

\$8 for 12 hours, enter garage after 12:30pm

\$6 for 12 hours, enter garage after 3pm

Weekends: \$8 for 12 hours

Pay with the iParkit app, or
get your parking ticket
validated (stamped) at the
front desk!





MIDWESTERN CAREER COLLEGE

EMERGENCY NUMBERS

CALL 911 IF...

- You are seriously hurt
- You are in immediate danger
- There is a fire
- You see a serious fight
- You see a situation where you or someone else could get hurt



CALL 311 OR THE LOCAL POLICE STATION IF

- Your passport was stolen
- Your wallet was stolen
- Someone broke into your house when you were gone
- Other non-immediate concerns





MIDWESTERN CAREER COLLEGE

POLICE STATIONS

NEAREST POLICE STATION

Chicago Police Department

1160 N Larrabee St

Chicago, IL 60610

(312) 742-5870





MIDWESTERN CAREER COLLEGE

SMOKING

RULES

- You must be 21 years of age or older to purchase cigarettes in Chicago
- You may NOT smoke or vape indoors
- You MUST be at least 15 feet away from a building to smoke





MIDWESTERN CAREER COLLEGE

DRUGS & ALCOHOL

ALCOHOL

- You must be 21 years of age or older to drink alcohol (beer, wine, or liquor)
- It is **ILLEGAL** to buy alcohol for a minor
- It is **ILLEGAL** to drink alcohol in public (on the street, on the beach, etc.)

DRUGS

- Marijuana and all other recreational drugs are **ILLEGAL** in Illinois.
- If you are found in possession of such items, you can face criminal charges and will be withdrawn from school.





MIDWESTERN CAREER COLLEGE

SEXUAL ASSAULT AND HARASSMENT

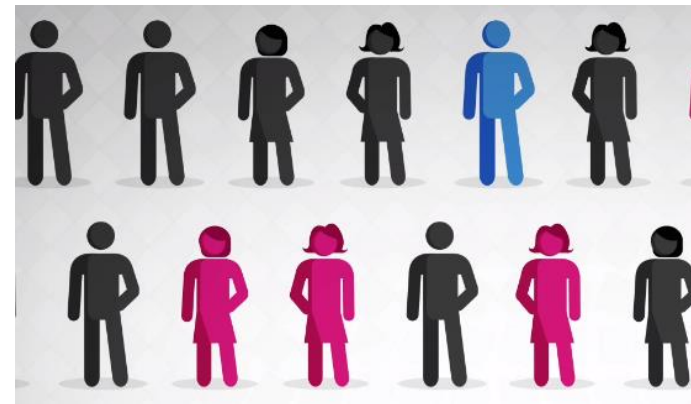
WHAT IS SEXUAL ASSAULT?

- Any sexual activity without the consent of both parties.

WHAT IS CONSENT?

A consensual sexual act or behavior requires that individuals:

- Agree to sexual activity freely and knowingly.
- Do not use threat, intimidation, or coercion.
- Are not temporarily or permanently impaired by drugs, alcohol, or any other physical/mental impairment.
- Are not unconscious or asleep.
- Are not under the age of consent (18 years old).





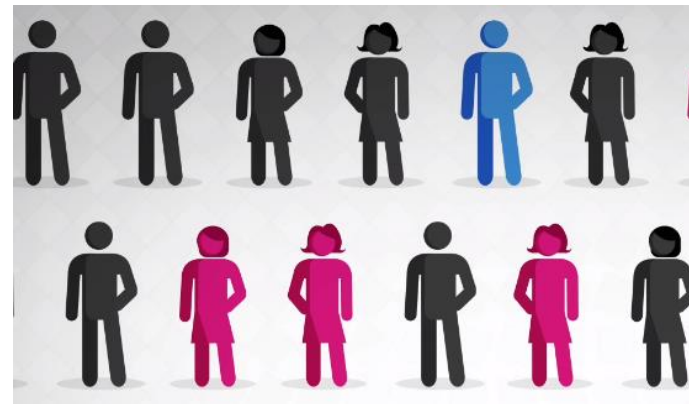
MIDWESTERN CAREER COLLEGE

SEXUAL ASSAULT AND HARASSMENT

WHO TO CONTACT?

If you have questions or want to talk to someone about sexual assault and harassment, contact:

- MCC's Confidential Counselor:
Olia Sweiss
osweiss@mccollege.edu
- MCC's Title IX Coordinator
Olga Gusak
ogusak@mccollege.edu





MIDWESTERN CAREER COLLEGE

MCC FACILITIES POLICY

OUR POLICY

- NO cellphones in class!
- Beverages with a lid are OK in the classrooms, food is not allowed
- Keep the cafeteria and your classroom clean
- Do NOT leave your food in the fridge
- Clean the sink when you are finished

- Have a positive attitude!



MIDWESTERN CAREER COLLEGE

F-1 Regulations

Midwestern Career College's Student Services/DSO, Jihoon Doh, can help you with most of your visa needs and concerns.





MIDWESTERN CAREER COLLEGE

F-1 STATUS

WHAT IS F-1 STATUS?

- F-1 status is a nonimmigrant visa status for students eligible to enroll in academic programs in the United States
- **All F students** that study in the United States and their dependents need a Form I-20



MIDWESTERN CAREER COLLEGE

I-20

WHAT IS AN I-20?

- There are 2 kinds of I-20: Initial and Active
- An I-20 is a legal document
- It is a certificate of eligibility for F-1 student status.
- You must sign the I-20 and have an active I-20.
- Always keep your I-20 safe.





MIDWESTERN CAREER COLLEGE

MAINTAINING F-1 STATUS

TO KEEP YOUR F-1 STATUS, YOU MUST:

- Maintain a Satisfactory Academic Progress (SAP)
- Keep a valid passport at all times
 - ✓ You can renew your passport at your country's embassy in the US
- Register for each term (tuition payment, and attendance)
- **Talk to your DSO** before you transfer, withdraw, change your current status, or travel outside the US



Note: Being an F-1 student means you can only work part-time on campus.



MIDWESTERN CAREER COLLEGE

WORKING IN THE US

F-1 STUDENTS CAN LEGALLY WORK ONLY IN THE FOLLOWING CASES:

- On Campus Employment (Part Time)
- Off Campus Employment (Economic Hardship)

The U.S. government takes illegal employment very seriously.

Illegal employment can lead to a termination of student's F-1 status





MIDWESTERN CAREER COLLEGE

UPDATING INFORMATION

UPDATE YOUR DSO WITH ANY CHANGE TO YOUR:

- Name
- Address (within 10 days of change)
- Phone number / Email address
- Legal status (changed to permanent resident or other visa categories including E2, H1B, etc.)

Tell your DSO about any and all changes to your personal information.

If there are any issues that result because you did not update your information with the DSO, MCC is not responsible for these complications.





MIDWESTERN CAREER COLLEGE

TRAVEL

TALK TO YOUR DSO

If you are traveling outside the US, you must obtain the DSO's signature on your active I-20. This allows you to return to the US.

To get the signature you must submit:

- A copy of your valid passport
- A copy of your valid visa
- Completed travel request form
- Proof of travel (paper ticket or e-ticket)

Note: You can NOT travel during the term, except for emergencies.





MIDWESTERN CAREER COLLEGE

GRACE PERIOD

PROGRAM COMPLETION

When you successfully complete your program, you are eligible for a 60 day grace period.

During this grace period, you can:

- Travel in the US and prepare for departure
- Apply for a change of status
- Transfer out to another school

60 days after you complete the program, you are considered to be out of status.





MIDWESTERN CAREER COLLEGE

DON'T FORGET!

CLASS START DATE:

Monday, January 22nd

STUDENT ID CARDS

Get your picture taken at the front desk.

Pick up your ID at the front desk the first week of classes!



CHECK YOUR EMAIL REGULARLY!



THANK YOU!