



WELCOME

MIDWESTERN CAREER COLLEGE

# MISSION

Midwestern Career College's ESL Program's mission is to provide non-native speakers of English with the English language, academic, and cultural skills that will enable them to further their education in U.S. colleges or universities and/or gain employment in their native countries.





MIDWESTERN CAREER COLLEGE

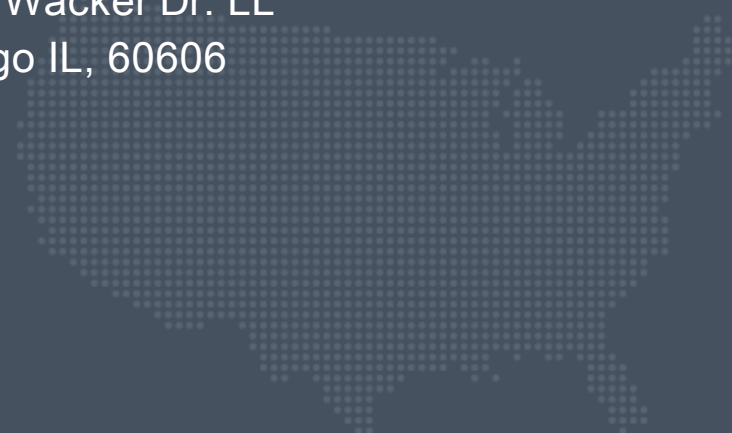
# CAMPUS LOCATIONS

---

## CHICAGO CAMPUS

20 N. Wacker Dr. Suite 3800  
Chicago IL, 60606

100 S Wacker Dr. LL  
Chicago IL, 60606





MIDWESTERN CAREER COLLEGE

# INTERNATIONAL DEPARTMENT

---



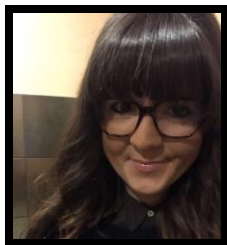
**PATRICIA FIENE**  
ESL Program Director



**MIRANDA MUELLER**  
Associate Director



**JIHOON DOH**  
International Student Advisor/DSO



**STEFANIE CARPENTIERI**  
Activities Coordinator



**OLIA SWEISS**  
Librarian



**AMMY AKARAPUNCHAI**  
International Admissions Coordinator



MIDWESTERN CAREER COLLEGE

# SCHOOL HOURS

---

## BUSINESS HOURS

Monday-Thursday: 9am – 6pm

Friday-Saturday 9am-4pm

Sunday: Closed

## CLASS SCHEDULES

### 4-DAY/WEEK

Monday - Thursday      9:30 – 2:30

MIDWESTERN CAREER COLLEGE

# ACADEMICS

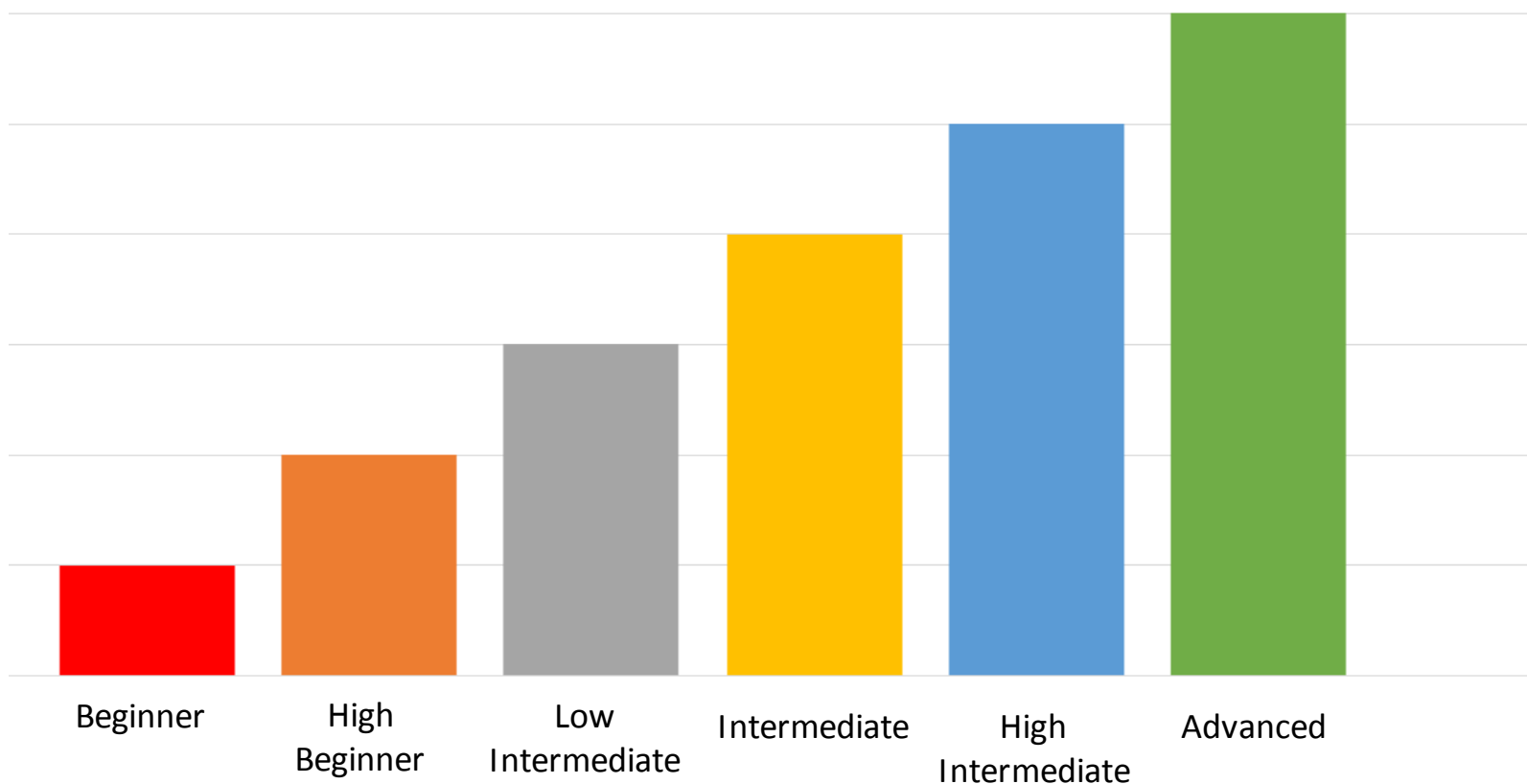
Midwestern Career College's ESL Program' is academically focused and geared to get you ready for speaking English inside and outside the classroom.





MIDWESTERN CAREER COLLEGE

# LEVEL PROGRESSION: 11 weeks / 1 level per term





MIDWESTERN CAREER COLLEGE

# SUBJECT AREA CLASSES

A close-up photograph of an open book with many pages. The pages are slightly yellowed and the book is open to a chapter page. A blue horizontal bar is overlaid at the top of the image.

READING

A close-up photograph of a person's hands writing in a spiral notebook. The person is holding a silver pen and has their left hand on the notebook. A blue horizontal bar is overlaid at the top of the image.

WRITING

A close-up photograph of a magnifying glass held over a document. The magnifying glass is focused on the word "GRAMMAR" in large, bold letters. Other text visible includes "ON-VII", "Paper-Q. 1 (b) : 5 M", and "Items from the". A blue horizontal bar is overlaid at the bottom of the image.

GRAMMAR

A photograph of a woman with long dark hair, wearing a light blue button-down shirt. She is looking to the right and has her right hand cupped behind her ear, indicating she is listening intently. A blue horizontal bar is overlaid at the bottom of the image.

LISTENING & SPEAKING





MIDWESTERN CAREER COLLEGE

# THE COMMUNICATIVE APPROACH



Learn English by  
communicating!

Requires your active  
participation in all  
skill classes.



MIDWESTERN CAREER COLLEGE

# ATTENDANCE

---

## THE RULES

- You **MUST** maintain a minimum of 70% attendance.
- Come to class **ON TIME**.
- Do not take long breaks in the middle of classes or leave early.
- There are no excused absences.
- If you cannot attend class, email your instructor.
- If you are out of class for more than 21 days, you will be withdrawn from the program.



MIDWESTERN CAREER COLLEGE

# SATISFACTORY ACADEMIC PROGRESS

---

## WHAT IS IT?

- To pass to the next level, you must receive a final grade of a C (70%) or higher.
- If you fail a class, you must participate in academic advising.
- If you fail a class three times, you will be withdrawn from the program.





MIDWESTERN CAREER COLLEGE

# ACADEMIC RESOURCES

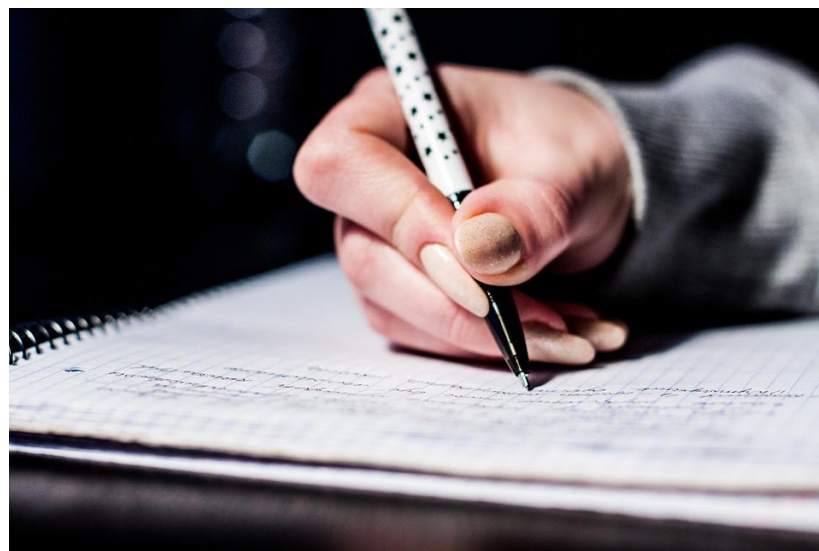
---

## FIRST STEP

- Talk to your instructor if your class or a specific topic is too difficult.

## OUTSIDE RESOURCES

- MCC's Library's Web-Based Tools: ESL Resources
- Chicago Public Library ESL Center



MIDWESTERN CAREER COLLEGE

# Learning Resource Center

MCC provides resources for ESL students, including textbooks, extra books to help you study, and online resources such as games, videos, worksheets, and more!





MIDWESTERN CAREER COLLEGE

# GETTING YOUR BOOKS

---

## WHEN DO YOU GET THEM?

The school Librarian will distribute your books on the first day of class.

## CAN I EXCHANGE MY BOOKS FOR FREE IF I CHANGE LEVELS?

- Yes! But only if there is NO writing in your book.
- If you write in your book or use the online workbook code and you want to change levels, you may have to pay for your next book.
- If you are concerned that you are not in the correct level, do NOT write in your book.





MIDWESTERN CAREER COLLEGE

# ESL LIBRARY RESOURCE CENTER

## HOW TO ACCESS:

1. Go to [mccollege.edu](http://mccollege.edu)
2. Click Academics
3. Click MCC Online Library

A screenshot of the Midwestern Career College website. The top navigation bar includes contact information: (312) 236-9000 and admissions@mccollege.edu, along with links for Request Information and Log in. The main navigation menu includes: WHY MCC, ACADEMICS (highlighted), LOCATIONS, ADMISSIONS, INTERNATIONAL, CAREERS, and BLOG. Under the ACADEMICS menu, there are three columns of program listings: ASSOCIATE'S OF APPLIED SCIENCE (AAS) with sub-items Diagnostic Medical Sonography, Magnetic Resonance Imaging (MRI) Technology, and Non-Invasive Cardiovascular Sonography; CERTIFICATE PROGRAMS with sub-items Dialysis Technologist Training Program, Electroneurodiagnostic (END) Technologist, Magnetic Resonance Imaging (MRI) Technologist, Medical Assisting Program-Diploma, and Surgical Technologist Training Program; and ESL DEPARTMENT with sub-item English Language Training. The LIBRARY and MCC Online Library options are highlighted with a red box. At the bottom, there are four main navigation buttons: REQUEST INFO (with a book icon), APPLY ONLINE (with a graduation cap icon), VISIT CAMPUS (with a globe icon), and EVENTS (with a calendar icon).



MIDWESTERN CAREER COLLEGE

# ESL LIBRARY RESOURCE CENTER

## HOW TO ACCESS:

4. Library Tools and Resources
5. ESL Web-Based Tools

Or access via this web address:

<http://mccollege.libguides.com/home/eslwebtools>

The screenshot shows the Midwestern Career College Library website. At the top left is the college logo and name. Below it is a breadcrumb trail: "Midwestern Career College / LibGuides / MIDWESTERN CAREER COLLEGE LIBRARY / ESL Web-based Tools". The main heading is "MIDWESTERN CAREER COLLEGE LIBRARY". On the right, there is a search box with the text "Search this Guide" and a "Search" button. On the left, there is a vertical menu of blue buttons: "Home", "Library Tools & Resources", "Databases", "Web-based Tools", "Program-Based Web Tools", "ESL Web-based Tools" (highlighted with a red border), "Tutoring", and "Copyright Information". In the center, there is a large graphic of the letters "ESL" where each letter is filled with various national flags. Below the graphic is the text "ENGLISH AS A SECOND LANGUAGE". At the bottom, there is a "CONTACT THE LIBRARIAN" button and a horizontal navigation bar with the following items: "Listening", "Writing, Grammar & Punctuation", "Reading", "Vocational", "Speaking", "Vocabulary", and "Multi-Purpose ESL Web-based Tools".



MIDWESTERN CAREER COLLEGE

# Activities & Social Media

We offer several activities for our students at Midwestern Career College!





MIDWESTERN CAREER COLLEGE

# MCC INTERNATIONAL ACTIVITIES





MIDWESTERN CAREER COLLEGE

# SOCIAL MEDIA

---



Like us on social media to get the latest news from MCC!

**@MIDWESTERN  
CAREER COLLEGE -  
INTERNATIONAL**

Learn about:

- On-Campus Employment Opportunities
- School Events
- Activities



MIDWESTERN CAREER COLLEGE

# MEET YOUR CLASSMATES!

---



Take a  
break!

MIDWESTERN CAREER COLLEGE

# NEED TO KNOW

There are a few things you need to know to get started in Chicago. We're here to help!

Medical Insurance

Housing

Transportation

Emergency Numbers

US Laws





MIDWESTERN CAREER COLLEGE

# MEDICAL CENTERS IN THE US

---

# OVERVIEW OF THE US HEALTHCARE SYSTEM



MIDWESTERN CAREER COLLEGE

# MEDICAL INSURANCE

MCC HIGHLY RECOMMENDS THAT YOU  
PURCHASE MEDICAL INSURANCE

## **PSI Health Insurance**

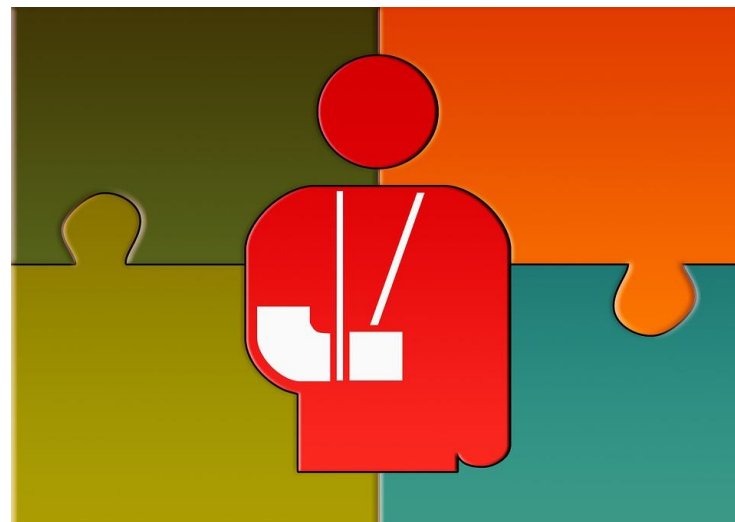
<https://www.psiservice.com/>

## **ISO Student Health Insurance**

<https://www.isoa.org/>

## **iNext International Health Insurance**

<https://www.inext.com/>



Ask Jihoon for  
more  
information!





MIDWESTERN CAREER COLLEGE

# MEDICAL CENTERS IN THE US

---

## WALK-IN CLINIC

- Minor illnesses (Throat, Eye, Ear pain and more)
- Vaccinations (Influenza, Hepatitis A & B and more)

## URGENT CARE

- Non life threatening emergencies (Minor fractures in fingers or toes, Skin rashes and infections, Vomiting, diarrhea, or dehydration, Cuts that don't involve much blood but might need stitches)

## HOSPITAL OR EMERGENCY ROOM

- All life threatening medical conditions (Broken bone, serious head, neck, or back injury, etc.)





MIDWESTERN CAREER COLLEGE

# NEARBY MEDICAL CENTERS

---

## HOSPITAL (EMERGENCY ROOM)

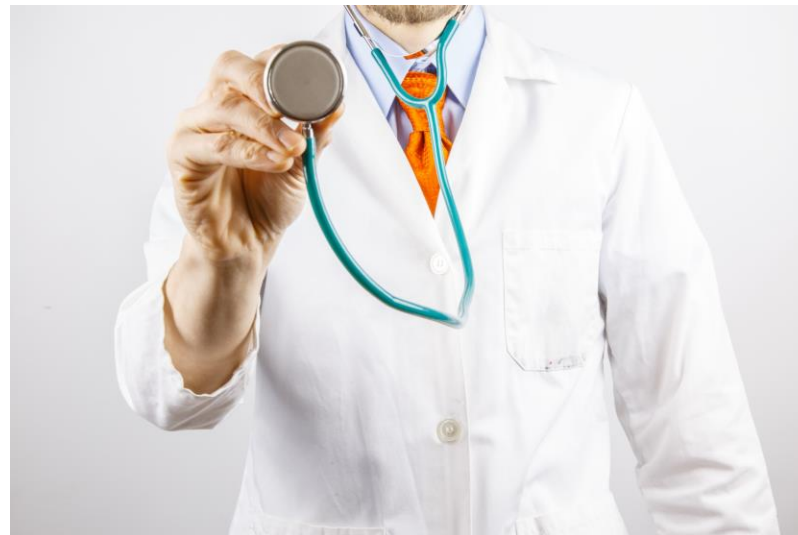
### **Northwestern Memorial Hospital**

251 E Huron St.  
Chicago, IL 60611  
(312) 926-2000

## URGENT CARE

### **Physician's Immediate Care**

600 W Adams St  
Chicago, IL 60661  
(312) 506-0900



## PHARMACY

### **Walgreens**

79 W Monroe St  
Chicago, IL 60603  
(800) 323-8622

### **CVS**

208 W Washington St  
Chicago, IL 60606  
(312)323-8622

## CLINIC

### **Walgreens**

79 W Monroe St  
Chicago, IL 60603  
(800) 323-8622



MIDWESTERN CAREER COLLEGE

# FIND HOUSNIG

---

## HOW TO FIND HOUSING

- Look for an apartment on Housing websites.
- Contact the owner via email or by phone.
- Visit the apartment with a friend.
- Ask questions about price, safety, utilities.
- Sign the contract.



Ask Jihoon  
for more  
information!



MIDWESTERN CAREER COLLEGE

# HOUSING TIPS

## RENTING AN APARTMENT

- When you rent an apartment, you may have to pay a(n):
  - Application Fee
  - Security Deposit
  - Move-in Fee

**Make sure everything is in writing!**

## VISITING APARTMENTS

- Always visit apartments with a friend
- If you feel uncomfortable talking to the owner, you probably do not want to live there
- If you immediately do not like the neighborhood, you do NOT have to see the apartment



Ask Jihoon  
for more  
information!



MIDWESTERN CAREER COLLEGE

# HOUSING

## GENERAL HOUSING & RELOCATION SERVICES

**ApartmentSearch.com**

<https://www.apartmentsearch.com/>

**WellStay**

<https://www.wellstayusa.com/our-mission>

**Apartment Finder**

<https://www.apartmentfinder.com>

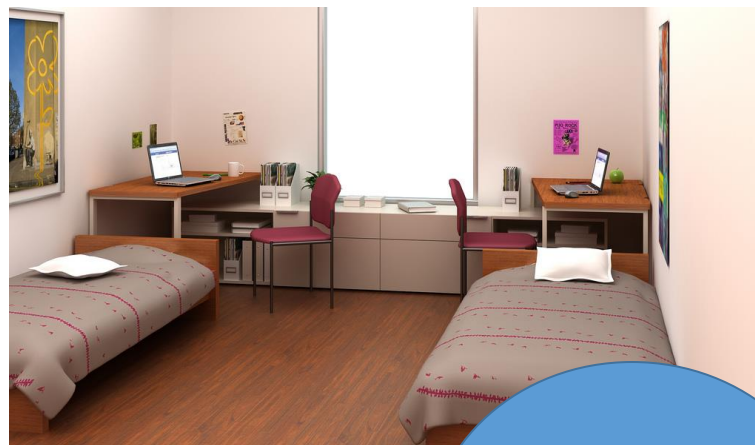
**Apartments.com**

<https://www.apartments.com/>

## FURNITURE RENTAL SERVICES

**CORT Furniture**

<https://www.cort.com/student>



Ask Jihoon  
for more  
information!



MIDWESTERN CAREER COLLEGE

# PHONE PLANS

---

## HOW TO GET A US PHONE NUMBER

If you haven't purchased a U.S phone yet, you can get a SIM card from Jihoon's Office and get a U.S Phone number.

No need to buy a new phone!

## PROVIDER

**campusSIMs**

<https://campussims.com/us/>



Ask Jihoon  
for more  
information!



MIDWESTERN CAREER COLLEGE

# DRIVING

---

## HOW TO GET A DRIVER'S LICENSE?

You can apply for a driver's license at your local Department of Motor Vehicles (DMV) office.

The office usually requires,

- Active I-20
- Passport
- Proof of residence
- A letter from DSO

## Nearby Office

Chicago Central Illinois Secretary of State  
Facility  
100 W Randolph St, Chicago, IL 60601  
(312) 793-1010





MIDWESTERN CAREER COLLEGE

# TRANSPORTATION



# UBER

# lyft







MIDWESTERN CAREER COLLEGE

# GETTING YOUR VENTRA CARD FOR THE CTA

Get your Ventra Card at  
CVS, Walgreens, or the  
train station!

NOTE: MCC does  
not offer a U-Pass



Register your card at  
[www.ventrachicago.com](http://www.ventrachicago.com)





MIDWESTERN CAREER COLLEGE

# PARKING AT MCC

---

## PARKING

### **Washington-Wells Self Park**

**230 W. Washington St.**

\$14 for 12 hours, enter garage before 12:30pm

\$7 for 12 hours, enter after 12:30pm

\$6 for 12 hours, enter garage after 3pm

Weekends: \$8 for 12 hours

### **Washington Franklin**

**217 W. Washington St.**

\$15 for 12 hours, enter garage before 12:30pm

\$8 for 12 hours, enter garage after 12:30pm

\$6 for 12 hours, enter garage after 3pm

Weekends: \$8 for 12 hours

Pay with the iParkit app, or  
get your parking ticket  
validated (stamped) at the  
front desk!





MIDWESTERN CAREER COLLEGE

# EMERGENCY NUMBERS

---

## CALL 911 IF...

- You are seriously hurt
- You are in immediate danger
- There is a fire
- You see a serious fight
- You see a situation where you or someone else could get hurt



## CALL 311 OR THE LOCAL POLICE STATION IF

- Your passport was stolen
- Your wallet was stolen
- Someone broke into your house when you were gone
- Other non-immediate concerns





MIDWESTERN CAREER COLLEGE

# POLICE STATIONS

---

## NEAREST POLICE STATION

### **Chicago Police Department**

1160 N Larrabee St

Chicago, IL 60610

(312) 742-5870





MIDWESTERN CAREER COLLEGE

# SMOKING

---

## RULES

- You must be 21 years of age or older to purchase cigarettes in Chicago
- You may NOT smoke or vape indoors
- You MUST be at least 15 feet away from a building to smoke





MIDWESTERN CAREER COLLEGE

# DRUGS & ALCOHOL

---

## ALCOHOL

- You must be 21 years of age or older to drink alcohol (beer, wine, or liquor)
- It is **ILLEGAL** to buy alcohol for a minor
- It is **ILLEGAL** to drink alcohol in public (on the street, on the beach, etc.)

## DRUGS

- Marijuana and all other recreational drugs are **ILLEGAL** in Illinois.
- If you are found in possession of such items, you can face criminal charges and will be withdrawn from school.





MIDWESTERN CAREER COLLEGE

# SEXUAL ASSAULT AND HARASSMENT

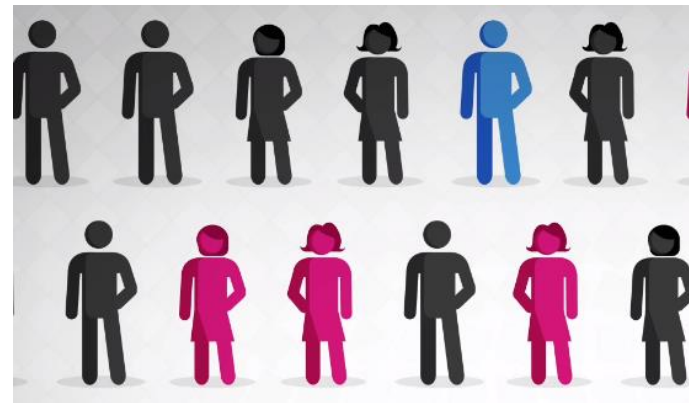
## WHAT IS SEXUAL ASSAULT?

- Any sexual activity without the consent of both parties.

## WHAT IS CONSENT?

A consensual sexual act or behavior requires that individuals:

- Agree to sexual activity freely and knowingly.
- Do not use threat, intimidation, or coercion.
- Are not temporarily or permanently impaired by drugs, alcohol, or any other physical/mental impairment.
- Are not unconscious or asleep.
- Are not under the age of consent (18 years old).



If you have questions or want to talk to someone, contact MCC's Confidential Counselor, Olia Sweiss, at [osweiss@mccollege.edu](mailto:osweiss@mccollege.edu)



MIDWESTERN CAREER COLLEGE

# MCC CLASSROOM POLICY

---

## OUR POLICY

- NO cellphones in class!
- Beverages with a lid are OK in the classrooms, food is not allowed
- Keep the cafeteria and your classroom clean
- Do NOT leave your food in the fridge
- Clean the sink when you are finished
  
- Have a positive attitude!





MIDWESTERN CAREER COLLEGE

# F-1 Regulations

Midwestern Career College's Student Services/DSO, Jihoon Doh, can help you with most of your visa needs and concerns.





MIDWESTERN CAREER COLLEGE

# F-1 STATUS

---

## WHAT IS F-1 STATUS?

- F-1 status is a nonimmigrant visa status for students eligible to enroll in academic programs in the United States
- **All F students** that study in the United States and their dependents need a Form I-20



MIDWESTERN CAREER COLLEGE

# I-20

---

## WHAT IS AN I-20?

- There are 2 kinds of I-20: Initial and Active
- An I-20 is a legal document
- It is a certificate of eligibility for F-1 student status.
- You must sign the I-20 and have an active I-20.
- Always keep your I-20 safe.





MIDWESTERN CAREER COLLEGE

# MAINTAINING F-1 STATUS

## TO KEEP YOUR F-1 STATUS, YOU MUST:

- Maintain a Satisfactory Academic Progress (SAP)
- Work only if approved by DSO
- Keep a valid passport at all times
  - ✓ You can renew your passport at your country's embassy in the US
- Register for each term (tuition payment, and attendance)
- **Talk to your DSO** before you transfer, withdraw, change your current status, or travel outside the US,





MIDWESTERN CAREER COLLEGE

# WORKING IN THE US

---

F-1 STUDENTS CAN LEGALLY WORK ONLY IN THE FOLLOWING CASES:

- On Campus Employment (Part Time)
- Off Campus Employment (Economic Hardship)

The U.S. government takes illegal employment very seriously.

Illegal employment can lead to a termination of student's F-1 status





MIDWESTERN CAREER COLLEGE

# UPDATING INFORMATION

UPDATE YOUR DSO WITH ANY CHANGE TO YOUR:

- Name
- Address (within 10 days of change)
- Phone number / Email address
- Legal status  
(changed to permanent resident or other visa categories including E2, H1B, etc.)

If you do not update this information with your DSO, issues may arise. If you do not tell your DSO about your new information, MCC is not responsible for any issues that occur.





MIDWESTERN CAREER COLLEGE

# TRAVEL

---

## TALK TO YOUR DSO

If you are traveling outside the US, you must obtain the DSO's signature on your active I-20. This allows you to return to the US.

To get the signature you must submit:

- A copy of your valid passport
- A copy of your valid visa
- Completed travel request form
- Proof of travel (paper ticket or e-ticket)

Note: You can NOT travel during the term, except for emergencies.





MIDWESTERN CAREER COLLEGE

# GRACE PERIOD

## PROGRAM COMPLETION

When you successfully complete your program, you are eligible for a 60 day grace period.

During this grace period, you can:

- Travel in the US and prepare for departure
- Apply for a change of status
- Transfer out to another school

**60 days after you complete the program, you are considered to be out of status.**







MIDWESTERN CAREER COLLEGE

# DON'T FORGET!

## CLASS START DATES:

Monday, January 22<sup>nd</sup>

Tuesday, January 23<sup>rd</sup>

Saturday, January 27<sup>th</sup>

## STUDENT ID CARDS

Get your picture taken at the front desk.

Pick up your ID at the front desk the first week of classes!

## CHECK YOUR EMAIL REGULARLY!





THANK YOU!